

Alden Sherman Co.

CPM (RHC62-65) Demo

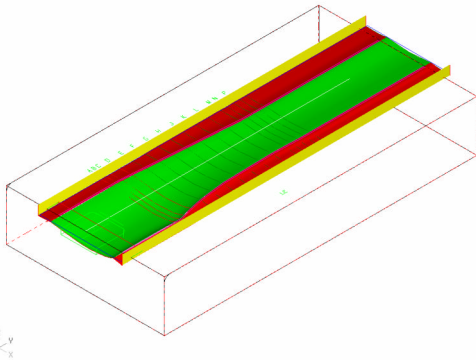
Machine

VIBRA-FREE super high-speed machine center

- Cutting feed-rate 472 in/min
- Advanced FANUC 16i-MA CNC with High Precision Contour Control (HPCC)
- Direct drive (motorized) Super-High-Speed spindle (42000RPM)
- Vibration-free rigid NT bridge structure
- Compact ATC with 18 tools
- Graphite & direct hard milling (Up to HRC62) capability

Part (Blank size: 10" x 5" x 1.6")

Forge Die



Specifications

Number of program: 3 (O3331, O3332, O3337)
 Number of cutting tool: 3 (T10, T11, T12)
 Stock material: CPM (HRC 62-65)

Demo Summary

Both rough and finish in harden state (demo cut)

TOOLPATH	CUTTER	COATING	RPM	IPM	TIME (min)
Rough	3mm Ball EM	TiALN	13000	50	230
Finish			23000	138	60
Total time					290

Rough in soft state (<HRC45) and finish in harden state (estimation)

TOOLPATH	CUTTER	COATING	RPM	IPM	TIME (min)
Rough	3mm Ball EM	TiALN	30000	175	60
Finish			23000	138	60
Total time					120