

Graphite Work Sample

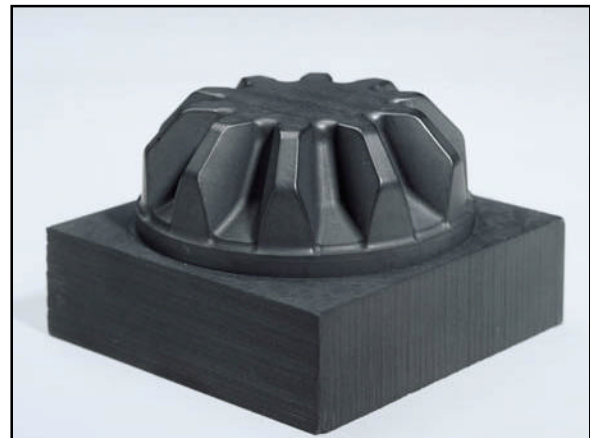
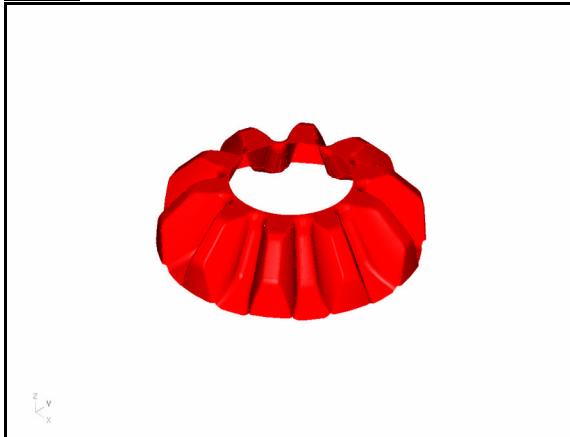
Machine

VIBRA-FREE super high-speed machine center



- Cutting feed-rate 472 in/min
- Advanced FANUC 16i-MA CNC with High Precision Contour Control (HPCC)
- Direct drive (motorized) Super-High-Speed spindle (42000RPM)
- Vibration-free rigid NT bridge structure
- Compact ATC with 18 tools
- Graphite & direct hard milling (Up to HRC62) capability

Part (Blank size: 3" x 3" x 2")



Specifications

Number of program: 2 (O0641, O0637)
Number of cutting tool: 2 (T13, T14)
Stock material: Graphite

Demo Summary

| TOOLPATH | CUTTER | COATING | RPM | IPM | TIME (min) |
|------------|-------------|---------|-------|-----|------------|
| Rough | 3mm Ball EM | TIALN | 40000 | 472 | 5 |
| Finish | 3mm Ball EM | TIALN | 40000 | 472 | 8 |
| Total time | | | | | 13 |